

AVONDALE CLYDESDALE & VINTAGE DAY

Sunday 20 June
11am to 3pm

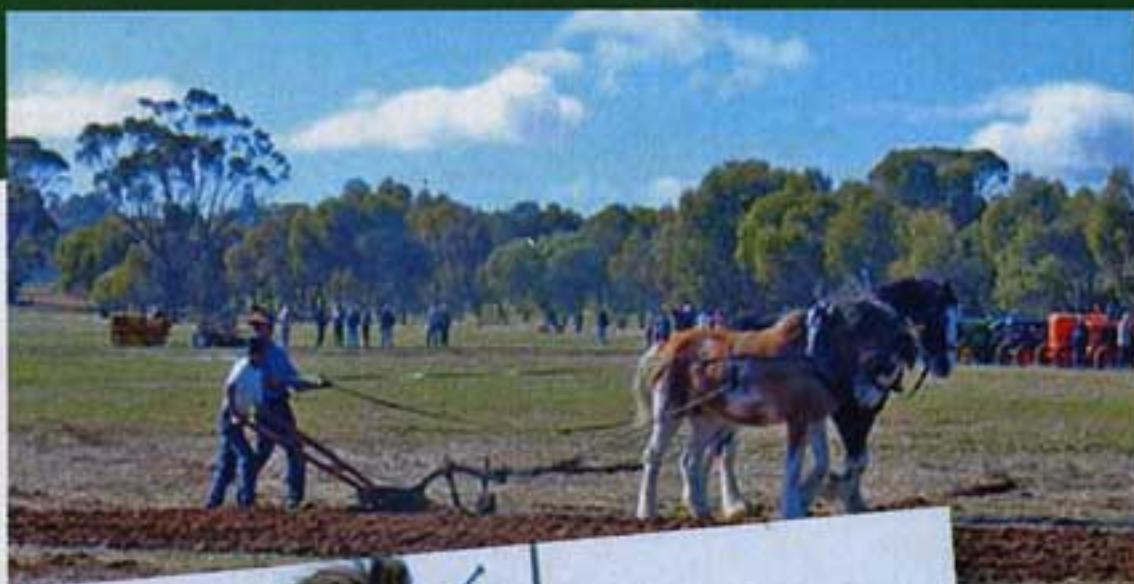


photo: Sue Manning



Enjoy a special day in the country - see Clydesdale horses at work, and vintage tractors and equipment in action! Entry by gold coin donation. Food and drink available.



NATIONAL TRUST

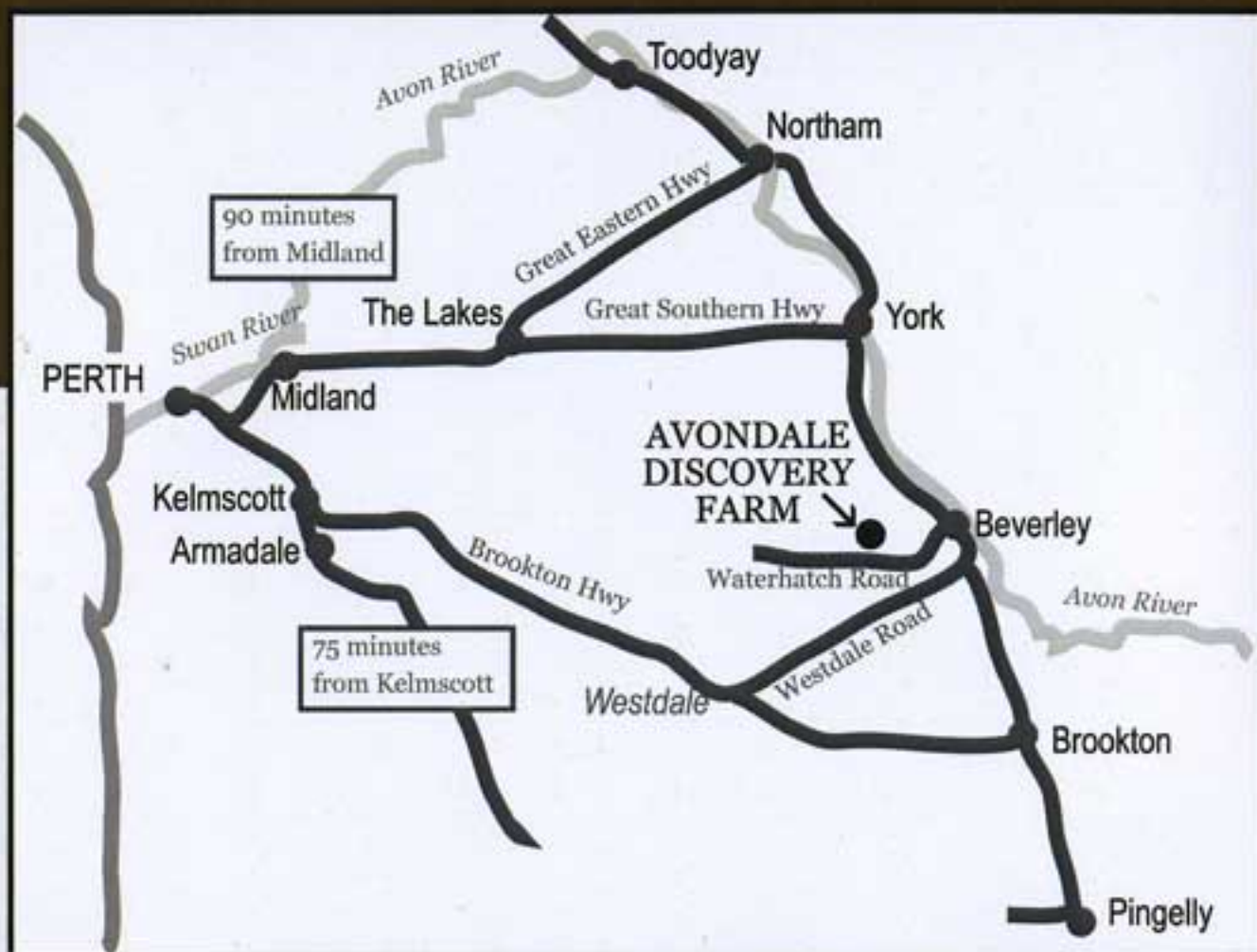
AVONDALE

DISCOVERY FARM

BEVERLEY Western Australia

AVONDALE DISCOVERY FARM

Beverley



Avondale is a working farm just outside the historic wheatbelt town of Beverley in the Avon Valley.

You can wander through the 1850s homestead to see how the pioneers lived. Then stroll into the 1890s stables and meet the Clydesdale horses, and investigate the huge range of working vintage farm machinery in the Machinery Museum. See what's happening on the land when you drive the Landcare Drive Trail and admire the views of the Avon Valley from the Nature Reserve.

Avondale is about one and a half hours from the city via York and the Great Southern Highway, or via Kelmscott and the Brookton Highway.

Bring a picnic, enjoy the playground and use the free BBQs.

More information: phone 9646 1004
or visit www.beverleywa.com/avondale



NATIONAL TRUST

AVONDALE
DISCOVERY FARM
BEVERLEY Western Australia